



I. Who are we?

A. As a Congregation

B. Comprised of people who...

C. Issues facing congregation

D. Milestones

E. Feelings about present year

F. Youth perspectives

G. Saint John on the Desert age and gender demographics



A. Who are we as a congregation?

- ❖ A congregation focused on mission.
- ❖ An inviting congregation with strong support for those in need.
- ❖ Desire to see the church grow.
- ❖ Strong lay leadership.



B. Our congregation is comprised of people who...

- ❖ Enjoy fellowship
- ❖ Love God and one another
- ❖ Care and share our talents
- ❖ Support our mission programs through deeds
- ❖ Support community through volunteerism



C. Issues facing our congregation

- ❖ Declining membership
- ❖ Youth distraction by material world
- ❖ Families that need help
- ❖ Seniors that need support
- ❖ Misunderstood goals for our church
- ❖ Mission programs that need broader commitment
- ❖ Poor communication within our church
- ❖ Ever increasing budget



C. Issues facing our congregation (cont.)

- ❖ Insufficient communication
- ❖ Lack of youth programs, youth facilities, and youth ministry
- ❖ Lack of agreement on our musical ministry
- ❖ Lack of adequate storage
- ❖ Challenge of moving socializing into worship
- ❖ Lack of a men's group
- ❖ Lack of young lay leadership
- ❖ Invisibility in the larger community



D. Milestones

- ❖ Installation of Gary Gard
- ❖ Initiation of missions
- ❖ Building sanctuary
- ❖ Establishing a choir
- ❖ Good lay leadership bridging gap between pastors
- ❖ 25th Anniversary
- ❖ Becoming financially self sustaining
- ❖ Growing youth group



E. Feelings about the present year

- ❖ Good church attendance
- ❖ Difficulty with preacher scheduling unpredictability
- ❖ Nothing's falling apart
- ❖ Enjoy varying leadership
- ❖ Music has been a point of contention
- ❖ Mixed signals from Presbytery
- ❖ Low communication from church groups
- ❖ Grieving is necessary
- ❖ Frustrating, now hopeful
- ❖ Tensions among differing members
- ❖ Mostly positive and enthusiastic about the future



F. Youth Perspectives

Milestones:

- ❖ Installation of Gary Gard
- ❖ Building Sanctuary
- ❖ Special youth activities
- ❖ Gary Gard collapsing in church
- ❖ Josh French was the first person Gary Gard visited in hospital
- ❖ Youth group visiting Castles and Coasters
- ❖ Youth Force Halloween and Collosal Cave
- ❖ Youth Force dance at First Christian Church
- ❖ Installation of new sound system in sanctuary



F. Youth Perspectives (cont.)

Present feelings:

- ❖ Declining attendance in youth group
- ❖ Youth get full support
- ❖ Encouraged by welcoming new comers to the church
- ❖ Enjoy staying in church on communion Sunday
- ❖ Drama group is exciting
- ❖ Enjoy singing in church
- ❖ Love the upbeat music
- ❖ Enjoy Karaoke night
- ❖ Enjoy talent shows



F. Youth Perspectives (cont.)

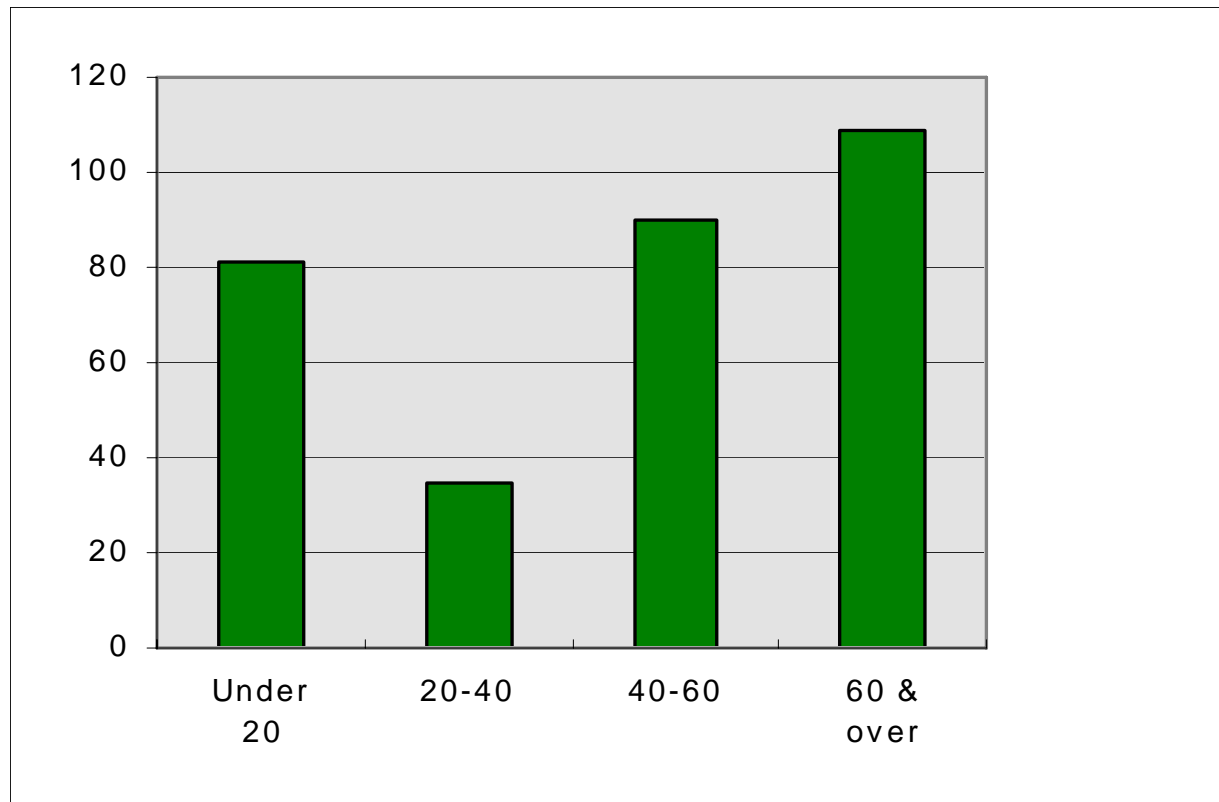
Hopes and Dreams of the future:

- ❖ More upbeat music
- ❖ Facilities for youth group
- ❖ Create mission projects and invite the larger community
- ❖ Create community service projects to draw people in
- ❖ Play bocci ball and basket ball at Udall Park
- ❖ Athletics into church life
- ❖ Have a youth force reunion event
- ❖ Involve more leaders in youth force

St John on the Desert Presbyterian Church, USA



Age Distribution Of Congregation



Under 20

81

20-40

35

40-60

90

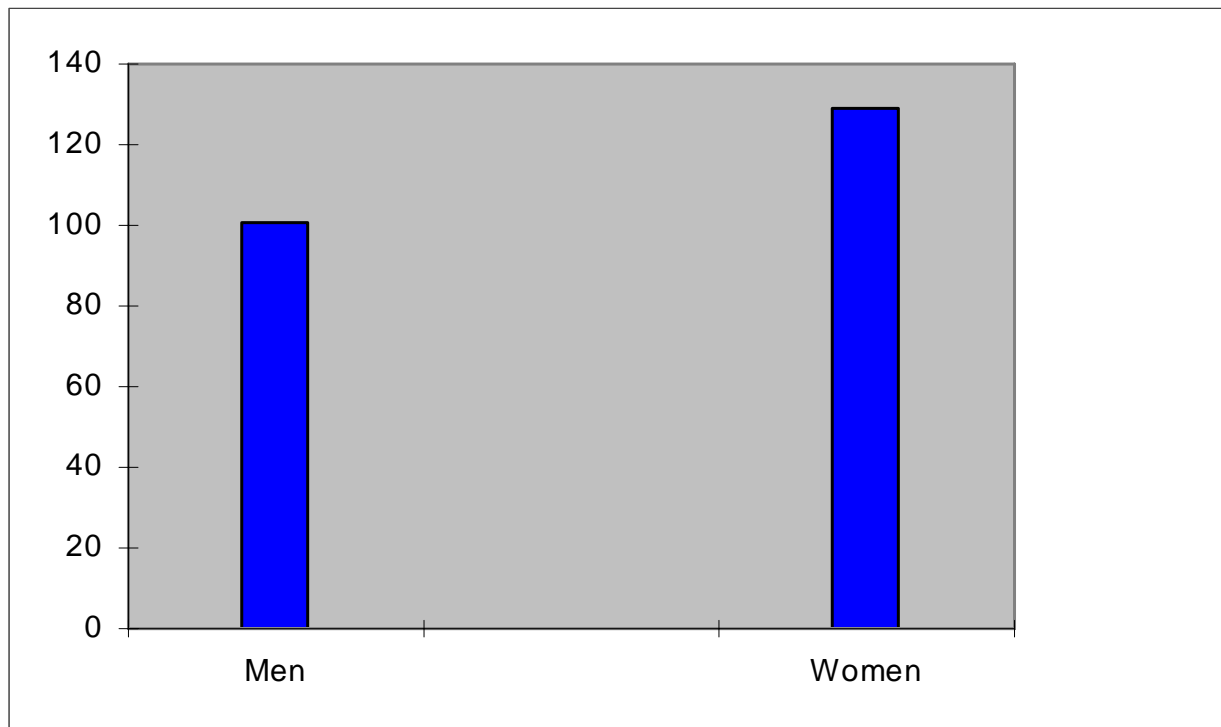
60 & over

109

St John on the Desert Presbyterian Church, USA



Congregation Gender Distribution





II. What are we doing?

A. Internal church activities

B. External church activities (mission)

C. Committees



What are we doing? Programs and accomplishments

A. Internal Church Activities

St. John on the Desert offers one worship service on Sundays at 10 am. Children, youth, and adult choirs perform regularly. Sunday school is offered for youth preschool through senior high school during the worship service. A well established nursery is available for children under the age of three. Adult bible study groups meet twice weekly.

At St. John on the Desert, fellowship opportunities are abundant. We offer activities for a small youth group which meets regularly for fun and fellowship. Additionally, monthly dinner groups (the Good Timers and Sojourners) meet in parishioners' homes. St. John on the Desert holds an annual spring picnic and stewardship dinner for the entire congregation. Perhaps our most significant fellowship opportunity is our weekly coffee fellowship time following our worship service.



What are we doing? Programs and accomplishments (cont.)

B. External Church Activities (Mission)

St. John on the Desert is well established in its mission projects throughout the community of Tucson. The following is a list of mission projects and programs:

Vacation Bible School, 2 cents a meal, Lunch bunch, What Sew Ever, The House of Neighborly Service, Campus Ministry, New Beginnings Women's Shelter, The Tucson Ulster Project, AZ Children's Home, Just Coffee, PWC diaper and sock drives, Hygiene bags for the homeless, Deacons "adopt a family" sponsorship, and support to low income schools.



Committees:

- ❖ **Buildings and Grounds: Tom Marshall**
- ❖ **Christian Education: Jessica Aldridge**
- ❖ **Finance and Stewardship: Jeanie Mangold**
- ❖ **Long Range Planning: Donna Coloman**
- ❖ **Mission Committee: Clark Romans**
- ❖ **Memorial Committee: *To be determined***
- ❖ **Personnel Committee: Jessica Aldridge**
- ❖ **Worship Committee: Doug Thompson**
- ❖ **Membership Committee: Susan Dimka**
- ❖ **Nominating Committee: Donna Coloman**
- ❖ **PWC: Jan Marshall**
- ❖ **Deacons: Donna Kuehn**

Committee detail of mission, goals, and objectives can be found in the appendix portion of this mission study.



III. Our relationship with the larger community

A. Issues of concern

1. Neighborhood
2. Tucson

B. Community Census, projections and estimates

1. Population
2. Household type
3. Age distribution

C. Interviews with individuals and professionals within the community

D. Zip code graph for Saint John members



A. Issues of concern

1. Neighborhood

- ❖ Isolation of the elderly
- ❖ Working Mothers/latch-key kids
- ❖ “Unchurched” people
- ❖ Our church’s support groups working in the community
- ❖ Mother’s day out programs
- ❖ Transportation for the elderly



A. Issues of concern (cont.)

2. Tucson

- ❖ Immigration reform
- ❖ Poverty
- ❖ Hunger
- ❖ Homelessness
- ❖ Language barriers
- ❖ Education
- ❖ Crime



Community Interviews

❖ Interview #1

On 4/20/2006, I interviewed Doug Karolak Assistant Federal Security Director for the Transportation Security Administration in Tucson regarding concerns or needs that the community has. Mr. Karolak had the following suggestions:

- ❖ Our congregation could contact the Tucson Airport Authority and volunteer to provide comfort and spiritual guidance to the traveling public, especially during holiday travel. Mr. Karolak indicated that the Phoenix Airport has a chapel and clergy who work at the airport on a regular basis. The Tucson Airport does not currently have that type of program.
- ❖ The St. Johns Clergy (pastor, Elders and Deacons) could volunteer to assist the Tucson Airport with spiritual needs if there was a disaster (aircraft accident or terrorist attack).

Mr. Karolak was extremely cooperative and appreciated our efforts to reach out to our community. If you need any additional information, please let me know.

Keith



Community Interviews (cont.)

❖ Interview #2

I had a very nice visit with Cheryl Kelly about the needs of their community and what the Church might do to help with these matters. She was very appreciative that they were included in our survey.

Some of the programs she mentioned that we might participate in: Bible study, entertainment especially by the youth groups, current events, card games, most any activity that would enrich the lives for in house residents.

She stated that they would need to know in advance when we could do any of this because they publish a calendar for each month and follow it.

This was a very pleasant experience and I am happy I had the opportunity to do it.

Jo



Community Interviews (cont.)

❖ Interview #3

I had the opportunity to visit with Naomi Yamasaka at "The Place" on East Tanque Verde. The Place is an elderly care facility for those with memory loss. Naomi said that they have many needs. They are as follows:

- ❖ People to play games with the residents
- ❖ Blankets or sh rugs (they are always cold)
- ❖ Singers to perform for entertainment
- ❖ People to pick up some residents on Sunday mornings so they can attend a church service

Naomi was excited that our church would have an interest in serving the east side community.

Lisa Taylor



Community Interviews (cont.)

❖ Interview # 4

By: Sarah Larson

1. What are some concerns or needs in the area of education today? Whose concern or need is it?

The main concerns are:

Student's home life effecting school and choices.

Funding to hire more teachers and teach more subjects

Religion in school (how to keep students from getting involved with bad things without getting into trouble for having religion in school)

2. What attempts have already been made to satisfy these concerns or need?

The main attempts have been:

7 periods 6 periods

Freshman orientation and FASST

Consequences

3. What would be an ideal solution (s) for the good of our community?

Mrs. Payne spoke of how she used to live in Texas and every school in Texas had a drug dog. Low and behold, there was never a problem in her school with substance abuse. Each dog was actually assigned to a school, and they were extremely good at detecting drugs. The dog at her school could actually smell drugs that were inside a car if the dog was on the outside and the car was closed up tight including windows. Instead of having a set schedule, the police would show up with the dog on random days of the month to check for drugs. Mrs. Payne would love to have this solution for Arizona ,but the state does not allow it because it would "take away students' free rights." Mrs. Payne and I agree that a student does not have free rights when it comes to drugs. (It's not like the dog has to go through a locker, car, etc. to check, they can just smell it without having to look inside).

4. What do you think our church congregation might do to help with this?

Main helping points for our congregation:

Educate families about drug abuse

Have kids talking to other kids about problems/ issues in their life

Hold activities that allow kids to feel connected and involved with a caring church family.



Community Interviews (cont.)

❖ Interview #5

By: Lynn Struthers-Peate

What would you say are two or three problems facing people in the neighborhood of our church?

Peter Livingston-VP and Clerk of Tanque Verde Elementary School Board
Affordable housing for younger families. Land and property costs have reached a level that only the very well off can afford. Zoning locks houses to no more than one per acre.

The good of the neighborhood is that the turnover is low and crime is low.

The schools are excellent. We still have enough turnover to keep young kids coming into the schools although there has been a decline in total

enrollment over the years. e.g.-there used to be 3 or 4 classes per grade

in both Aqua Caliente Elementary and Tanque Verde Elementary. Today we have dropped to 2 or 3 classes per grade which resulted in 200 student total

decline over 5 years. The last 2 years enrollment has been steady. This

decline has corresponded with the increase in property costs that started about 10 years ago.

Solution-Increase in economic development by good education and supporting programs such as JTED-Joint Technological Education Development.

Tanque Verde is the first district in Tucson to ask for this on the ballot. This

program allow High Schoolers to graduate not only with a High School degree but also a practical degree such as auto mechanic, medical assistant, optics technician,culinary specialists etc. This will be on the ballot in

November.

All schools can always use volunteers for playground monitors, tutors of office help.



Community Interviews (cont.)

Interview #6

By: Elizabeth Chabin

I spoke with Amity Foundation Director Mark Schuettinger today and he was very receptive to the idea of having support from our church. Amity foundation is a residential drug and alcohol recovery center. They call their clients students, and have approximately 60 students at this time. The students are made up of men and women, some of whom have children that live with them on campus. Mark came up with four areas of need: 1. Mothers and children's programs: this could be arts and crafts, music, games. Many of the mothers don't know how to interact with their children and could benefit from volunteers coming in and demonstrating as well as participating in the above mentioned. 2. Tutoring – Amity lost its funding from the County for GED tutoring. Many of the students need help preparing for the GED. 3. Off-property recreation – Amity is hoping to develop more off-property excursions this summer. Mark mentioned, for example a trip to Sabino Canyon. 4. Crafts, art, music: Mark feels that the students need to learn how to have fun. What is fun? The students attend a lot of heavy group sessions. He thinks they would benefit from classes that emphasize art, music, dance, games or anything fun. 5. Drought resistant landscape – Amity has 60 acres, most of which is not drought tolerant. The Eucalyptus trees are dying. They have their own water wells but are using too much water and fear losing a lot of vegetation. He would love to have a crew of interested volunteers create a drought resistant landscape.



Community Interviews (cont.)

❖ Interview 7

By: Bob Rudolph

Person Interviewed: Ray Carol

Ray was pleased about the potential involvement that Saint John on the Desert is seeking in the near future. The following was identified:

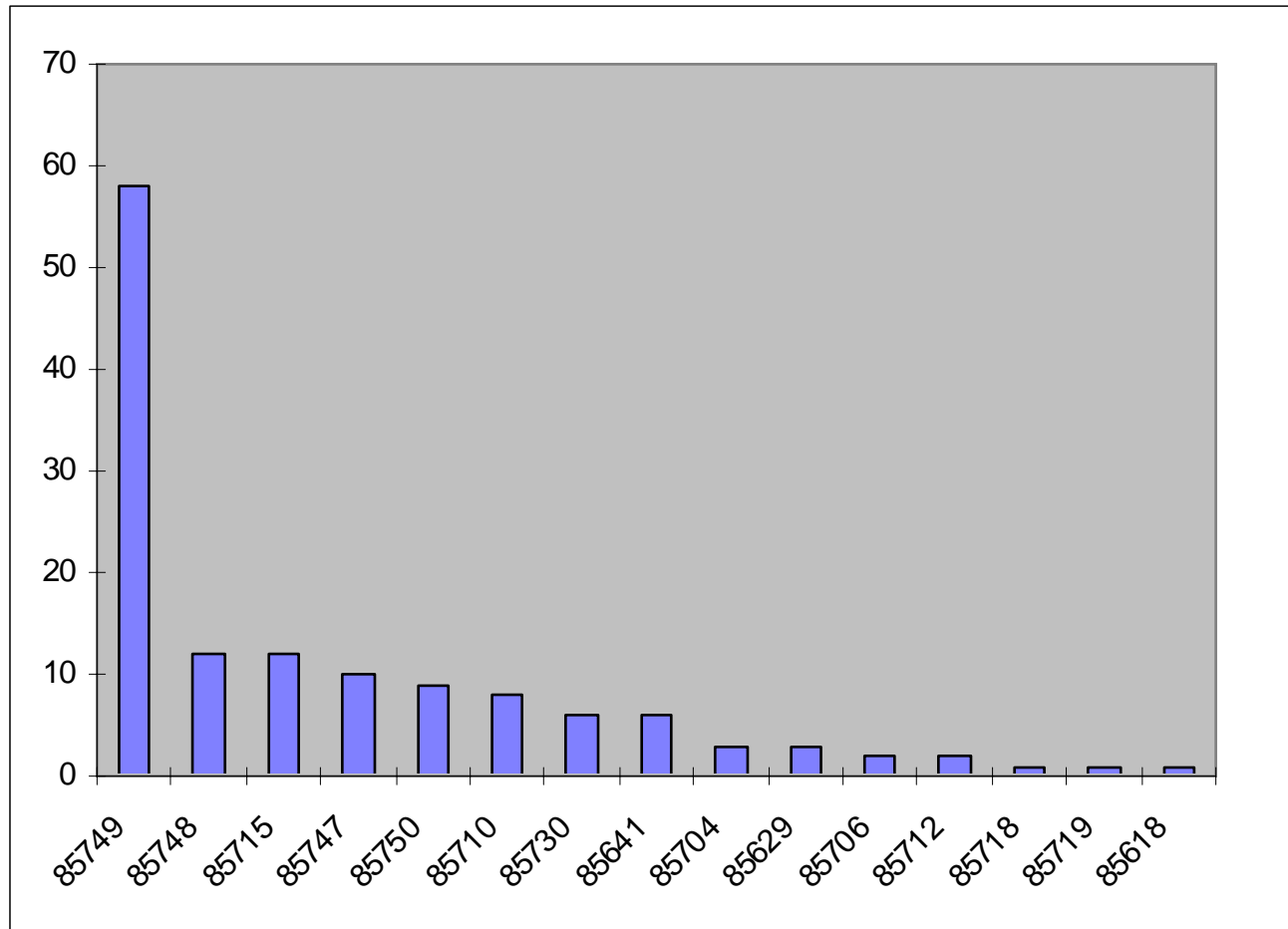
- ❖ Involvement with Agua Calienti and McCormic Parks.
- ❖ Involvement with the library

Ray suggested that we contact him when or if we want to implement any projects with the above locations. He will put us in touch with the appropriate people.

St John on the Desert Presbyterian Church, USA



Congregation by Zip Code





IV. Vision

A. Programs that should be considered

B. Hopes and dreams of the congregation

C. Mission Statement



A. Ministries/programs which should be considered

- ❖ Divorce recovery
- ❖ Organize volunteers for everyday life challenges
- ❖ Improve visitor contact during church service
- ❖ Minister shut-ins
- ❖ Greater utilization of our facilities
- ❖ Increase sensitivity to aging congregation members



B. Hopes and Dreams

- ❖ Grow congregation and choir
- ❖ New mission efforts
- ❖ Expand lay visitation of homebound members
- ❖ Movie screen and A.V. equipment in sanctuary
- ❖ Greater participation in pastor selection
- ❖ Five day a week preschool
- ❖ Youth Website
- ❖ Expanded family and youth programs
- ❖ Install best possible pastor match for congregation
- ❖ Professional youth/education minister



SAINT JOHN ON THE DESERT PRESBYTERIAN CHURCH Mission Statement, Description and Vision

Mission Statement:

Guided by the Holy Spirit, Saint John on the Desert seeks to glorify and spread the love shown by our Lord Jesus Christ, through Mission, Stewardship, Education, Evangelism and Fellowship.

Description of the congregation:

Saint John is a friendly, warm, open, mission-driven, faith-based church family. It is diversified in age, religious backgrounds and expectations, and desires enrichment through programs and revitalization. Members love God and one another enough that we are not pulled apart by our diversity in beliefs, thoughts and traditions, and we care and share our talents with each other to accomplish the goals of the church.

Our Future Direction and Vision:

In the near term, we seek an enlightened leadership that is energetic, dynamic, easy-going and provides a relaxed and balanced comfort level. We need to maintain and stabilize our membership.

In the long term, we need to grow our membership, strengthen our youth and family programs, identify and respond to needs in our own church family, improve communication within the church family and develop programs for the immediate community.